

DELIVERING **DIRECT**
TO YOUR DOOR



PARTS DIRECT

Vehicle Electronics & Diagnostics

**NEXT
DAY
DELIVERY***

NEW & SERVICE EXCHANGE PARTS

PRODUCT
CATALOGUE



CONTROL MODULES

SWITCHPACKS

DASHBOARDS

GAUGES



**2 YEAR WARRANTY
ON NEW PARTS**
**12 MONTH WARRANTY
ON SERVICE EXCHANGE PARTS**

Call us directly
to place your order:

www.actia.co.uk

01686 611150

*Depending on stock availability and payment

LED Midget Groove 28V White



- Alexander Dennis Euro 5 & 6 Binnacle Switches
- Optare Dash Switches Euro 4 – present

ACTIA Part no.: 005-00-8016
Customer Part no.: 662241

Air Pressure Gauge 3 (0-11 Bar)



- Alexander Dennis Euro 3 and below

ACTIA Part no.: 050-32-2305
Customer Part no.: 660221

Dash Internal Support - Armature



ACTIA Part no.: 075-46-0301
Customer Part no.: 444827

Switch on/none/off gr/none



- Alexander Dennis Euro 4

ACTIA Part no.: 070-03-8928
Customer Part no.: 658840

Switch Rotary Lighting



- Alexander Dennis Euro 5 & 6
- Rotary Lighting Switch 3 posn.
- E200, E300, E400
- MMC

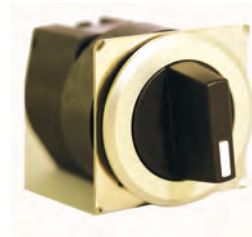
ACTIA Part no.: 070-04-0200
Customer Part no.: 661871



Switch Rotary Lighting – Auto Lights

- Alexander Dennis Euro 5 & 6
- Rotary Lighting Switch 4 posn. with Auto-lights function
- E200, E300, E400
- MMC

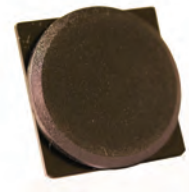
ACTIA Part no.: 070-04-0282
Customer Part no.: 070-04-0282



Switch Rotary 3 Position – Main-Off-Main

- Alexander Dennis Euro 4 lighting switch.
- Replacement for 070-04-0100, kit 662472 (Exterior Lighting switch and cab light required for complete conversion)

ACTIA Part no.: 070-22-0300
Customer Part no.: 661349



Blanking Plate 61/71 Series

- Alexander Dennis Euro 5 & 6 Binnacle Switch position blanks

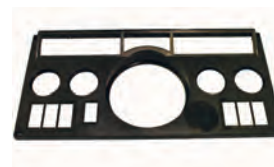
ACTIA Part no.: 071-05-0001
Customer Part no.: 445046



Plastic Insert 50mm

- Alexander Dennis Euro 5 & 6 shroud lever switch blank

ACTIA Part no.: 071-06-5000
Customer Part no.: 445055



Panel Moulding DM94

- Alexander Dennis Euro 3 and below
- Dart Fascia Panel
- Replacement front panel plastic moulding

ACTIA Part no.: 075-10-1220
Customer Part no.: ZZ11308





New & Service Exchange Parts



Side Pod Membrane Inserts

- Alexander Dennis Euro 4 – optional switch inserts for use with 660696

ACTIA Part no.: 075-10-2010
Customer Part no.: 439056

Moulded Warning Light Matrix DM94

- Alexander Dennis Euro 3 and below
- Dart Warning Light Matrix Plastic Moulding
- Replacement warning light matrix plastic moulding

ACTIA Part no.: 075-20-1220
Customer Part no.: 656128

Front & Rear Shroud Assembly – RHD

- Alexander Dennis Euro 4
- Steering Column Plastic Shroud
- Replacement front and back covers of steering column shroud, with screws
- Dart Enviro E200, E300, E400

ACTIA Part no.: 075-31-1276
Customer Part no.: 660909-27

Dash Front Moulding

- Alexander Dennis Euro 5 & 6 Binnacle Front Panel Replacement

ACTIA Part no.: 075-46-1002
Customer Part no.: 445042

Housing Warning Lights SD99

- ADL - E300 Euro 4

ACTIA Part no.: 075-20-1270
Customer Part no.: 431441



Warning Light Strip Trident 2 Euro 3 (battery)

- Alexander Dennis Euro 3 and below
- For use with panel variants 657380- (28-33,47,48)

ACTIA Part no.: 076-00-1228
Customer Part no.: 659783



SD99 Gasket SCU

- Alexander Dennis Euro 4

ACTIA Part no.: 079-01-2702
Customer Part no.: 660909-11



SD99 Gasket Warning Light

- Alexander Dennis Euro 4

ACTIA Part no.: 079-01-2703
Customer Part no.: 660909-12



Warning Light PCB Assembly DC97

- DC97

ACTIA Part no.: 101-25-2101
Customer Part no.: 658657



Switch Set Dash Optare

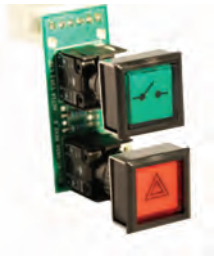
- Optare Euro 4
- Solo

ACTIA Part no.: 150-07-1000
Customer Part no.: 34R1049

Call for exclusive prices



Order Line | 01686 611150



Master/Hazard Switch Assembly Optare

- Optare Euro 5 & 6
- Solo, Versa, Tempo

ACTIA Part no.: 150-07-8051
Customer Part no.: 34100041



Start/Ignition Switch Assembly Optare

- Optare Euro 5 & 6
- Solo, Versa, Tempo

ACTIA Part no.: 150-07-8052
Customer Part no.: 34100061



Membrane Panel Enviro Assembly

- Alexander Dennis Euro 4
- Panel is supplied with a set of insertable legends making it configurable to meet any vehicle specification

ACTIA Part no.: 150-27-2250
Customer Part no.: 660696



Binnacle Sub-Assembly

- Alexander Dennis Euro 4
- Plastic Binnacle replacement – with metalwork (no electronics)

ACTIA Part no.: 150-27-2500
Customer Part no.: 661745



Starter/Ignition Switch Assembly

- Alexander Dennis Euro 5 & 6
- Replacement for Start/Stop and Ignition Switch Push buttons. Includes rear PCB board
- E200, E300, E400
- Not MMC

ACTIA Part no.: 150-46-0030
Customer Part no.: 445047



Switch Panel LH – ADL

- Alexander Dennis Euro 5 & 6
- Panel with 3 posn rotary switch, Master, Hazard and Fog push buttons
- E200, E300, E400
- Not MMC

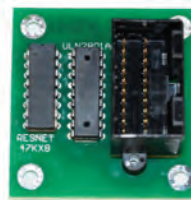
ACTIA Part no.: 150-46-0200
Customer Part no.: 445041



Switch Panel LH – Autolights – ADL

- Alexander Dennis Euro 5 & 6
- Panel with 4 posn. rotary switch, with Autolights function
- Master, Hazard and Fog push buttons
- E200, E300, E400
- Not MMC

ACTIA Part no.: 150-46-0202
Customer Part no.: 448149



EDC Inverter PCB-57040C

- Plaxton coach
- Signal inverter PCB fitted on EDC boards
- Panther, Paragon

ACTIA Part no.: 500-04-0005
Customer Part no.: 057040C



Harness –

- Alexander Dennis Euro 5 & 6 binnacle internal harness replaces 446984

ACTIA Part no.: 251-46-1030
Customer Part no.: 450547



Cable Detail Buzzer DM94

- Alexander Dennis Euro 3 and below

ACTIA Part no.: 251-22-2501
Customer Part no.: 656449





New & Service Exchange Parts



Cable Detail Buzzer Membrane PCB

- Alexander Dennis Euro 4, 5 and 6 replacement buzzer for panel variants
- 443787, 443788, 446858, 446859, 457483, 457484, 457485, 457486, 460293, 660696

ACTIA Part no.: 251-27-2750
Customer Part no.: 660909-16



DM94 Short Panel (Multiple Variants)

ACTIA Part no.: 500-01-2005



657347-DM94 Short Panel

- Alexander Dennis Euro 3 and below
- Dart Fascia Panel with Warning Light Display
- Sub-equipped instrument panel – no gauges/switches or harness
- Dart

ACTIA Part no.: 500-01-2001
Customer Part no.: 657347



DM94 Main PCB Standard

- Alexander Dennis Euro 3 and below
- Replacement Main Warning Light PCB Assembly, with bulbs fitted
- Dart

ACTIA Part no.: 500-01-2101
Customer Part no.: 659285



DM94 PCB Assembly

ACTIA Part no.: 500-01-2006



DM94-Main PCB Tri 3 USA

- Alexander Dennis Euro 3 and below
- Replacement Main Warning Light PCB Assembly, with bulbs fitted

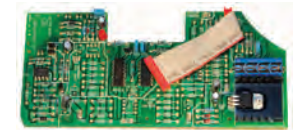
ACTIA Part no.: 500-01-2106
Customer Part no.: 659289



DM94-Main PCB Tri 2 Euro 3

- Alexander Dennis Euro 3 and below
- Replacement Main Warning Light PCB Assembly, with bulbs fitted
- Dart

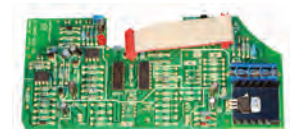
ACTIA Part no.: 500-01-2107
Customer Part no.: 659290



DM94-Daughter PCB Standard

- Alexander Dennis Euro 3 and below
- Replacement PCB Daughter Control Board - no buzzer fitted: order 656449 if required
- Dart – 650202 can be used in replacement

ACTIA Part no.: 500-01-2110
Customer Part no.: 659291



DM94-Daughter PCB Aladin Gear Box

- Alexander Dennis Euro 3 and below
- Replacement PCB Daughter Control Board - no buzzer fitted: order 656449 if required.
- Dart – support for Aladin Gearbox

ACTIA Part no.: 500-01-2111
Customer Part no.: 659292



DM94-Daughter PCB USA / Lance STD

- Alexander Dennis Euro 3 and below

ACTIA Part no.: 500-01-2113
Customer Part no.: 659294



Call for exclusive prices

Order Line | 01686 611150



DM94–Main PCB Trident/Dart

- Alexander Dennis Euro 3 / Euro 4
- Replacement Main Warning Light PCB Assembly, with bulbs fitted
- Dart/Trident 2

ACTIA Part no.: 500-01-2214
Customer Part no.: 660282

DM94 - Main PCB Non Aladin USA

ACTIA Part no.: 500-01-2103
Customer Part no.: 659286



Solo/IRB4 RH Dash Assembly

- Optare Euro 3 - also replaces 34R0444, 34R0443, 34R0227, 34R0248, 24100033, 34R0382, 25100033, 26100007, 24100124
- Solo

ACTIA Part no.: 500-03-2030
Customer Part no.: 28100045

NOTE: Wiring modifications may be required for replacement panels.

Side Console Final Assembly 15sw

- Optare Euro 4 – also replaces 34R0445, 34R0061, 34R0226, 25100032, 26100006 (15 push button switch pack Euro 3 and below)
- Solo, Tempo, Versa, Excel2

ACTIA Part no.: 500-03-1000
Customer Part no.: 34R0501



ADL-MultiC Panel 15 Button Body EMC

- Alexander Dennis Euro 5 & 6
- Replacement for 443786, 769000N72
- Supplied with optional switch inserts

ACTIA Part no.: 500-06-0060
Customer Part no.: 452295 / 769000055



Rotary Lighting Switch Conversion Kit

- Alexander Dennis Euro 4
- Exterior Lighting switch and cab light
- Dart, Enviro E200 E300, E400

ACTIA Part no.: 500-05-9011
Customer Part no.: 662472



Multic2 Adapter Harness

- Multic to Multic 2 Adapter

ACTIA Part no.: 201-07-5070



Optare MultiC2 MPH with MultiC 2 Adapter Harness

ACTIA Part no.: 500-07-7400
Customer Part no.: 29405465

Sorry,
No Image
Available

Optare MultiC2 KPH with MultiC Adapter Harness

ACTIA Part no.: 500-07-7450



Inst Cluster MultiC2s MPH ADL

- Alexander Dennis Euro 5 & 6
- Pre-programmed with software
- Unit may require programming for specific vehicle application file
- E200, E300, E400, not MMC

ACTIA Part no.: 500-06-9510
Customer Part no.: 662920





New & Service Exchange Parts



Instrument Cluster MultIC MPH ADL Download Repair

- Alexander Dennis Euro 5
- Pre-programmed with software
- Unit may require programming for specific vehicle application file
- E200, E300, E400

NOTE: Only available as repair

ACTIA Part no.: 500-06-9001REP



Inst Cluster MultIC MPH ADL Graphics 2 Repair

- Alexander Dennis Euro 5
- Pre-programmed with software
- Unit may require programming for specific vehicle application file
- E200, E300, E400

NOTE: Only available as repair

ACTIA Part no.: 500-06-9061REP



Inst Cluster MultIC MPH ADL Graphics 2 Repair

- Enviro 200, 300, 400
- 400h
- 350h

NOTE: Only available as repair

ACTIA Part no.: 500-06-9062REP



Instrument Cluster MultIC MPH ADL Repair

- Enviro 200, 300, 400
- 400h
- 350h

NOTE: Only available as repair

ACTIA Part no.: 500-06-9002REP

Sorry,
No Image
Available

Multic2 Adapter Harness ADL

ACTIA Part no.: 251-47-3051



Instrument Cluster MultIC MPH Optare ECOpack Repair

- Optare Euro 5
- Pre-programmed with software
- Unit may require programming for specific vehicle application file
- Solo, Tempo, Versa

NOTE: Only available as repair

ACTIA Part no.: 500-07-9002REP
Customer Part no.: 34100071

Sorry,
No Image
Available

Inst Cluster Multic2m MPH Optare - spares only

- Solo, Versa, Tempo

ACTIA Part no.: 500-07-9401
Customer Part no.: 29105473

SCU – Black and White Screen

Sorry,
No Image
Available

Inst Cluster Multic2m MPH Optare - spares only

- Solo Euro 6
- Versa Euro 6
- Tempo Euro 6

ACTIA Part no.: 500-07-9402

Sorry,
No Image
Available

ADL Multic2 MPH with Multic Adapter Harness

ACTIA Part no.: 500-06-7400

Sorry,
No Image
Available

ADL Multic MPH with Multic Adapter Harness

ACTIA Part no.: 500-06-7450



Call for exclusive prices

Order Line | 01686 611150



Multibus IOU2000 Std3 Transbus

- Alexander Dennis Euro 4, 5, 6, not MMC
- Plaxton coach
- Optare Euro 3, 4, 5, 6
- Enviro 200, 300, 400
- Elite, Panther, Paragon, Centro, Cheetah, Prima
- Solo, Tempo, Excel2, Versa

ACTIA Part no.: 501-06-2202
Customer Part no.: 659972



Multibus IOU2000 Std 3 Optare

- Optare Euro 3, 4, 5, 6
- Alexander Dennis Euro 4, 5, 6, not MMC
- Plaxton coach
- Solo, Tempo, Excel2, Versa
- Enviro 200, 300, 400
- Elite, Panther, Paragon, Centro, Cheetah, Prima

ACTIA Part no.: 501-06-1201
Customer Part no.: 34R0406



Multibus CAMU Std1 Optare

- Optare Euro 3, 4, 5, 6
- Alexander Dennis Euro 4, 5, 6, not MMC
- Plaxton coach
- Solo, Tempo, Excel2, Versa
- Enviro 200, 300, 400
- Elite, Panther, Paragon, Centro, Cheetah, Prima

ACTIA Part no.: 501-05-1101
Customer Part no.: 34R0405

NOTE: Unit will require programming for specific vehicle application file by the end user or their agent.

Multibus CAMU STD1 Transbus

- Alexander Dennis Euro 4, 5, 6, not MMC
- Plaxton coach
- Enviro 200, 300, 400
- Elite, Panther, Paragon, Centro, Cheetah, Prima

ACTIA Part no.: 501-05-2102
Customer Part no.: 659973

SLU PCB Assembly

- Optare, Alexander Dennis & Plaxton Coach
- Replacement Multiplex PCB node, usually mounted on switch mother board
- E300, Panther, Paragon. R-Series
- Solo, Excel2

ACTIA Part no.: 501-01-0301
Customer Part no.: 660387



Aladin Factory Reconditioned / Service Exchange

- Alexander Dennis Euro 3 and below
- Dart, Trident

ACTIA Part no.: 502-01-1706R
Customer Part no.: 655706R



Extension Module Dennis

- Alexander Dennis Euro 3 and below
- Extension module for use with main Aladin unit
- Dart

ACTIA Part no.: 502-01-1944
Customer Part no.: 655944



LED ECU Assembly

- Optare vehicles fitted with LED lighting

ACTIA Part no.: 501-10-1000
Customer Part no.: 28100128



ADL RH Chassis Membrane Panel Assembly

- Alexander Dennis Euro 5 & 6
- High reliability generic panel introduced to replace all earlier versions to improve reliability and extend the life of the door controls. Supplied with a set of insertable legends, the panel is configurable to meet any vehicle specification
- This unit supersedes all earlier versions and replaces the following part Nos: 443787, 443788, 446858, 446859, 457483, 457484, 457485, 457486.
- E200, E300, E400
- Not MMC

ACTIA Part no.: 500-06-0080
Customer Part no.: 460293





New & Service Exchange Parts



Coolant Level Indication Module - ADL (6 way conn) English

ACTIA Part no.: 501-08-4106
Customer Part no.: 664470

Sorry,
No Image
Available

Coolant Level Indication Module

- Alexander Dennis

ACTIA Part no.: 501-08-4000
Customer Part no.: 661230



Power 66

- ADL - E400 body on Volvo, Scania, BYD chassis

ACTIA Part no.: 501-07-0066
Customer Part no.: 76900212



Master 25

- ADL - E400 body on Volvo, Scania, BYD chassis

ACTIA Part no.: 501-07-1025
Customer Part no.: 76900211



SCU – Black and White Screen ADL Assembly

- Alexander Dennis Enviro Euro 4 Replacement SCU
- Enviro SCU application 300157 version 07 downloaded

ACTIA Part no.: 501-04-9270
Customer Part no.: 661828

NOTE: This monochrome unit replaces earlier colour units.



LED 2 Channel +24V Diag I/F Aftermarket

- Optare

ACTIA Part no.: 501-08-1202
Customer Part no.: UN34R0489



Power 33

ACTIA Part no.: 501-07-0033



Cable Detail - Buzzer 81dBA DM94

- Dennis Dart
- Trident

ACTIA Part no.: 251-22-2504
Customer Part no.: 658758



Cable Detail Ribbon TM02

- Dennis E300 Euro 4
- Dennis 200 Euro 4
- Dennis 400 Euro 4
- MMC body on Scania, Volvo, BYD chassis

ACTIA Part no.: 251-27-2550
Customer Part no.: 7690001N04

Sorry,
No Image
Available

ADL Assembly E300

- Alexander Dennis Enviro 300 Replacement SCU

ACTIA Part no.: 501-04-9275
Customer Part no.: 661828-1

NOTE: This monochrome unit replaces earlier colour units.



Call for exclusive prices

Order Line | 01686 611150

Warning Light Strip Trident DM94



ACTIA Part no.: 076-00-1221
Customer Part no.: 659376

Warning Light Strip Dart SLF E3



ACTIA Part no.: 076-00-1225
Customer Part no.: 659423

Warning Light Strip Trident2 & Dart



ACTIA Part no.: 076-00-1230
Customer Part no.: 660179

MCU - Assembly



ACTIA Part no.: 101-28-2100

Master / Hazard Swith Assembly - MultiC Master Optare



ACTIA Part no.: 150-07-8261
Customer Part no.: 32105121

Start / Ignition Switch Assembly - MultiC Master Optare



- Dennis Dart
- Trident

ACTIA Part no.: 150-07-8262
Customer Part no.: 32105122

Podium Top Left Front Panel



- ADL E350
- ADL E350h (Caetano body)

ACTIA Part no.: 150-48-1011
Customer Part no.: 662639-34

658480-DM94 Short Panel



- Dennis Dart, Trident

ACTIA Part no.: 500-01-2002
Customer Part no.: 658480

E400 Scania / Volvo Chassis Warning



- Dennis R-Series chassis
- Panther
- Paragon

ACTIA Part no.: 500-05-0810
Customer Part no.: 7690002N46

Side Console 15SW LHD2 J1939 Final Assembly



- Optare Solo, Versa, Tempo Euro 6 (LHD)

ACTIA Part no.: 500-03-1061
Customer Part no.: 41105010





New & Service Exchange Parts

Sorry,
No Image
Available

ADL MultiC2s - MPH Binacle

- Enviro 200, 300, 400
- 400h
- 350h

ACTIA Part no.: 500-06-0551
Customer Part no.: 458099



Harness Trident & Dart

ACTIA Part no.: 201-22-2215
Customer Part no.: SK1115



Harness ADL MultiC 2 - (Hybrid)

- Dennis E300h, E350h, E400h

ACTIA Part no.: 251-47-3000
Customer Part no.: 463691



Call for exclusive prices

Order Line | 01686 611150

DELIVERING **DIRECT**
TO YOUR DOOR

**NEXT
DAY**
DELIVERY*

ACTIA®

PARTS DIRECT

Vehicle Electronics & Diagnostics

NEW & SERVICE EXCHANGE PARTS

Order GENUINE parts
DIRECT from us,
the **Manufacturer**

We are now supplying our wide range of NEW and Service Exchange parts delivered direct to your door.

All parts are genuine, safe, reliable, and fully tested.

NEW parts come with a 2 year warranty,
and our service exchange parts
have a 12 month warranty.



2 YEAR WARRANTY
ON NEW PARTS
12 MONTH WARRANTY
ON SERVICE EXCHANGE PARTS

Call us directly
to place your order:

01686 611150

www.actia.co.uk

*Depending on stock availability and payment